

# FASP

Florida Association of School Psychologists

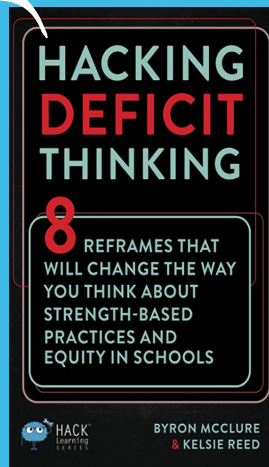
## YOUR PATH TO STRENGTH-BASED PRACTICES

### Summer Virtual Institute 2023 July 13th - July 14th

# FEATURING KEYNOTE SPEAKER DR. BYRON MCCLURE, NCSP



About the Book



## DR. JULIE GETTMAN, NCSP, ABSNP

PRESENTING: **UNLOCKING YOUR CRITICAL THINKING SUPERPOWERS: ELEVATING ASSESSMENTS & BOOSTING STUDENT SUCCESS**



## JULIE WEATHERLY, ESQ.

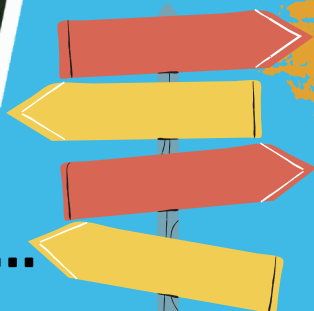
PRESENTING: **SPECIAL EDUCATION LAW UPDATE FOR SCHOOL PSYCHOLOGISTS**

SCAN QR CODE  
OR CLICK ON THE LINK  
TO REGISTER



REGISTRATION LINK:  
[HTTPS://BEACON360.CONTENT.ONLINE/XBCS/S2492/CATALOG/PRODUCT.XHTML?EID=50549](https://beacon360.content.online/xbcs/s2492/catalog/product.xhtml?eid=50549)

# & MORE...



# FASP

Florida Association of School Psychologists

## Summer Virtual Institute 2023

### YOUR PATH TO STRENGTH-BASED PRACTICES



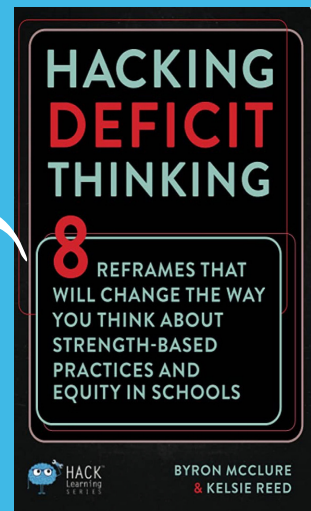
# DR. BYRON MCCLURE, NCSP

July 13th from 8:30-9:00am

### About the Keynote Speaker

Dr. Byron McClure is a renowned National Certified School Psychologist, best-selling author of Hacking Deficit Thinking, and visionary educator committed to shifting from what's wrong to what's strong.

Dr. McClure holds a Doctor of Education in School Psychology from the Indiana University of Pennsylvania and has over a decade of experience driving change in inner-city communities. Notable for his innovative approach, Dr. McClure has created groundbreaking programs, like Students With A Goal (SWAG) and the Student-Athlete Education Program (SAEP), designed to meet the social and emotional needs of youth furthest from opportunity. As the Assistant Director of School Redesign, he led school transformation initiatives such as the Dream Team, which helped both students and staff learn and use their strengths. Currently, he serves as the Director of Innovation at 7 Mindsets, where he continues transforming the future of education and promoting mental wellness.



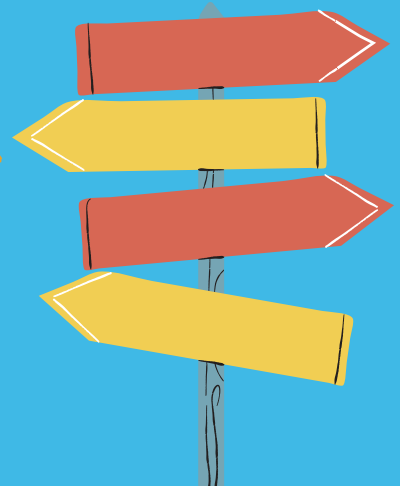
### About the Book

In Hacking Deficit Thinking, you'll learn how to:

- Build on student strengths
  - Think about student empathy
    - Humanize your data
    - Recognize the value of differences
  - Think about teacher empathy
  - Talk about equity in schools
    - Tap into school-wide strengths
  - Flourish as an educator
- Ready to reframe your thinking and go from what's wrong to what's strong



SCAN QR CODE TO REGISTER



**CLICK HERE**

# FASP

Florida Association of School Psychologists

## YOUR PATH TO STRENGTH-BASED PRACTICES

### Summer Virtual Institute 2023



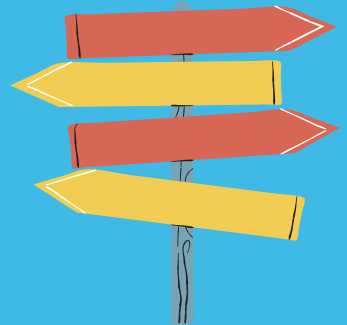
### About the Speaker

**DOROTHY OPPENHEISER,**  
IS THE CHILDREN'S CARE COORDINATOR FOR  
SOUTHEAST FLORIDA BEHAVIORAL HEALTH NETWORK,  
INC. & THE FLORIDA SCHOOL HEALTH ASSOCIATION,  
PAST PRESIDENT

NASP PRACTICE DOMAINS  
1, 2, 3, 4, 5.

**TRAUMA RESPONSIVE PRACTICES FOR SCHOOL  
PSYCHOLOGISTS**

*July 13th - 9 am - 12 pm - 3 CEs*



### Abstract

IMPLEMENTING TRAUMA RESPONSIVE PRACTICES CAN BE A CHALLENGE IN THE EVER-CHANGING SCHOOL ENVIRONMENT. COMPLEX FACTORS INFLUENCE YOUTH BEHAVIOR, COUPLE THAT WITH STANDARD SCHOOL PRACTICES THAT TRY TO EXTINGUISH THOSE BEHAVIORS, IT IS COMMON TO SEE THAT THE INTENDED OUTCOME OF BEHAVIOR CHANGE IS OFTEN NOT ACCOMPLISHED. THIS SESSION WILL FOCUS ON SEVERAL DIFFERENT MODELS OF COGNITIVE BEHAVIORAL DESCRIPTORS AND APPLYING THOSE TO EFFECTIVE INTERVENTIONS. THIS UNDERSTANDING PROVIDES THE FRAMEWORK FOR CREATING TRAUMA RESPONSIVE PRACTICES. USING A RESILIENCE LENS FOR CREATING HEALING CENTERED ENVIRONMENTS, THIS SESSION WILL EXPLORE BEYOND A SIMPLE UNDERSTANDING FUNCTIONAL BEHAVIOR. TRAUMA RESPONSIVE PRACTICES CAN BE IMPLEMENTED TO BUILD A CULTURE THAT ACKNOWLEDGES AND ANTICIPATES THAT MANY YOUTH HAVE HISTORIES OF TRAUMA AND THAT THE ENVIRONMENT AND INTERACTIONS WITHIN THE SCHOOL SETTING CAN EXACERBATE THE DIFFERENT MANIFESTATIONS OF TRAUMA.



### Learning Objective Highlights

- DEFINE HOW TOXIC STRESS CONTRIBUTES TO EXACERBATION OF TRAUMA HISTORY IN YOUTH.
- UNDERSTAND AND EXPLAIN THE PREVALENCE AND LONG-TERM EFFECT OF ADVERSE CHILDHOOD EXPERIENCES, ACE'S.
- APPLY HOW ADVERSE EXPERIENCES AFFECT BEHAVIOR AND FUNCTION IN SCHOOL SETTINGS.
- EXPLAIN HOW TRAUMATIC LIFE EXPERIENCES AFFECT THE BRAIN AND THE STRATEGIES AND PROTECTIVE FACTORS THAT MITIGATE AND PROMOTE HEALING IN THE BRAIN.
- SHARE THE KEY COMPONENTS OF A TRAUMA RESPONSIVE CULTURE AND PRACTICE IN SCHOOL SETTINGS.
- UTILIZE STRATEGIES IN HELPING SCHOOL DISTRICT STAFF UNDERSTAND TRAUMA RESPONSIVE PRACTICES.

Summer Institute Rates (pre-registration)

Regular Members - \$90

Non-Members - \$150

Student Members - \$25

Early Career/Retired Members - \$65

SCAN QR CODE OR  
CLICK THE LINK TO  
REGISTER

**REGISTRATION LINK:**  
[HTTPS://BEACON360.CONTENT.ONLINE/XBCS/S  
2492/CATALOG/PRODUCT.XHTML?EID=50549](https://beacon360.content.online/xbcs/s/2492/catalog/product.xhtml?eid=50549)



### Summer Virtual Institute 2023



## JULIE GETTMAN, PHD, NCSP ABSNP

UNLOCKING YOUR CRITICAL THINKING SUPERPOWERS: ELEVATING ASSESSMENTS AND BOOSTING STUDENT SUCCESS.

July 13th from 1:00 pm - 4:00pm



About the Speaker

3 CEs

DR. GETTMAN IS A NATIONALLY CERTIFIED SCHOOL PSYCHOLOGIST AND DIPLOMATE IN SCHOOL NEUROPSYCHOLOGY BY ABSNP. SHE IS AN ASSOCIATE DIRECTOR OF SCHOOL NEUROPSYCHOLOGY INSTITUTE. DR. GETTMAN HAS 27 YEARS OF EXPERIENCE AS A CLINICIAN AND CONSULTANT. SHE OWNS MINDWORKS ASSESSMENT, A PRIVATE PRACTICE SPECIALIZING IN COMPREHENSIVE NEUROCOGNITIVE ASSESSMENT FOR CHILDREN AND ADOLESCENTS.



Abstract

NASP PRACTICE MODEL DOMAINS: 1, 2 & 3

CRITICALLY ANALYZING ASSESSMENT AND INTERVENTION APPROACHES IS NECESSARY TO DEVELOP INOVATIVE SOLUTIONS. WE WILL EXAMINE OUR OWN ASSUMPTIONS WHEN GATHERING BACKGROUND INFORMATION THEN DISCUSS HOW TO CRITICALLY CHOOSE A BEST-FIT TEST BATTERY. WE WILL ANALYZE PROBLEM SOLVING PATTERNS, RESPONSE STYLES AND OBSERVED BEHAVIORS. WE WILL DISCUSS USING CRITICAL THINKING SKILLS TO TAILOR INTERVENTIONS AND PROVIDE MEANINGFUL WRITTEN AND VERBAL FEEDBACK WITH THE GOAL OF FINDING WAYS TO ALSO INCREASE A STUDENTS CRITICAL THINKING SKILLS.



Learning Objectives

- 1) ANALYZE CURRENT, ROUTINE ASSESSMENT PRACTICES AND FORMULATE IDEAS TO ENHANCE PRACTICE.
- 2) CHOOSE AND EFFECTIVELY INTERPRET STANDARDIZED AND QUALITATIVE DATA USING A PROCESS ORIENTED APPROACH.
- 3) DESIGN PROCEDURES TO CREATE MEANINGFUL FEEDBACK SESSIONS AND INTERVENTIONS THAT ARE TAILORED TO INDIVIDUAL STUDENT NEEDS

Summer Institute Rates (pre-registration)

Regular Members - \$90

Non-Members - \$150

Student Members - \$25

Early Career/Retired Members - \$65



SCAN QR CODE OR  
CLICK THE LINK TO  
**REGISTER**

REGISTRATION LINK:

[HTTPS://BEACON360.CONTENT.ONLINE/XBCS/S  
2492/CATALOG/PRODUCT.XHTML?EID=50549](https://beacon360.content.online/xbcs/s2492/catalog/product.xhtml?eid=50549)

# FASP

Florida Association of School Psychologists

## YOUR PATH TO STRENGTH-BASED PRACTICES

### Summer Virtual Institute 2023



## JULIE WEATHERLY, ESQ

SPECIAL EDUCATION LAW UPDATE FOR SCHOOL PSYCHOLOGISTS

July 14th from 9:00am - 12:00pm

 About the Speaker

3 CEs

JULIE J. WEATHERLY, ESQ IS THE OWNER OF RESOLUTIONS IN SPECIAL EDUCATION, INC., A SPECIAL EDUCATION LAW AND CONSULTING FIRM IN ALABAMA. SHE PROVIDES TRAINING NATIONWIDE TO SUPPORT SPECIAL EDUCATION LEGAL COMPLIANCE FOR ADDITIONAL INFORMATION ABOUT THE FIRM, VISIT [WWW.SPECIALRESOLUTIONS.COM](http://WWW.SPECIALRESOLUTIONS.COM)

 Learning Objectives

NASP PRACTICE MODEL DOMAINS: 2 & 10

- 1) TO UPDATE PARTICIPANTS ON CURRENT LEGAL ISSUES IN SPECIAL EDUCATION;
- 2) TO INCREASE AWARENESS OF PARTICIPANTS REGARDING LEGAL COMPLIANCE IN SPECIAL EDUCATION, AND
- 3) TO PERFORM PARTICIPANTS ABOUT THE "HOTTEST" TOPICS IN SPECIAL EDUCATION LAW

**SCAN OR CLICK THE  
LINK TO REGISTER**

Summer Institute Rates (pre-registration)  
Regular Members - \$90

Non-Members - \$150

Student Members - \$25

Early Career/Retired Members - \$65



**REGISTRATION LINK:**

[HTTPS://BEACON360.CONTENT.ONLINE/XBCS/S  
2492/CATALOG/PRODUCT.XHTML?EID=50549](https://beacon360.content.online/xbcs/s2492/catalog/product.xhtml?eid=50549)

### Summer Virtual Institute 2023

# DR. CARLOS BLAINE DR. PAULA LEWIS

## STRENGTH-BASED PRACTICES IN AN MTSS FRAMEWORK

July 14th 1 pm - 4 pm - 3 CES



### About the Speakers

NASP PRACTICE DOMAINS  
1, 2, 3, 4, 5.

DR. BLAINE IS THE REGIONAL COORDINATOR AT THE UNIVERSITY OF SOUTH FLORIDA WHERE HE PROVIDES TRAINING, TECHNICAL ASSISTANCE, AND SUPPORTS TO FLORIDA SCHOOL DISTRICTS ON THE IMPLEMENTATION OF A MULTI-TIERED SYSTEM OF SUPPORTS.

DR. LEWIS IS THE FLORIDA ASSOCIATION OF SCHOOL PSYCHOLOGISTS PRESIDENT AND DIRECTOR OF STUDENT SERVICES AT INDIAN RIVER COUNTY SCHOOLS. DR. LEWIS DIRECTS THE DISTRICT'S COMPREHENSIVE PROGRAM OF STUDENT SERVICES. DR. LEWIS EMBRACES LEADERSHIP FOR MENTAL HEALTH PROFESSIONALS BY COLLABORATIVELY PROVIDING PROFESSIONAL DEVELOPMENT OPPORTUNITIES.



### Abstract

TO DEBUNK COMMON MISCONCEPTIONS SURROUNDING MULTI-TIERED SYSTEM OF SUPPORTS (MTSS) AND STRENGTH-BASED PRACTICES IN EDUCATION. THESE FRAMEWORKS HAVE POSITIVELY IMPACTED STUDENT DEVELOPMENT AND ACADEMIC SUCCESS. HENCE, MISCONCEPTIONS OFTEN ARISE, LEADING TO MISUNDERSTANDINGS AND MISSED OPPORTUNITIES FOR IMPLEMENTATION. BY ADDRESSING THESE MISCONCEPTIONS, EDUCATORS CAN BETTER UNDERSTAND THE TRUE NATURE AND POTENTIAL BENEFITS OF MTSS AND STRENGTH-BASED PRACTICES.



### Learning Objective Highlights

1. UNDERSTAND THE KEY PRINCIPLES AND GOALS OF MULTI-TIERED SYSTEM OF SUPPORTS (MTSS) AND STRENGTHS-BASED PRACTICES IN EDUCATION.
2. IDENTIFY COMMON MISCONCEPTIONS ASSOCIATED WITH MTSS AND STRENGTHS-BASED PRACTICES.
3. GAIN A DEEPER UNDERSTANDING OF THE BENEFITS AND POTENTIAL IMPACT OF MTSS AND STRENGTHS-BASED PRACTICES ON STUDENT DEVELOPMENT AND ACADEMIC SUCCESS

Summer Institute Rates (pre-registration)

Regular Members - \$90

Non-Members - \$150

Student Members - \$25

Early Career/Retired Members - \$65

SCAN QR CODE OR  
CLICK THE LINK TO  
REGISTER



REGISTRATION LINK:

[HTTPS://BEACON360.CONTENT.ONLINE/XBCS/2492/CATALOG/PRODUCT.XHTML?EID=50549](https://beacon360.content.online/xbcs/2492/catalog/product.xhtml?eid=50549)



# FASP

Florida Association of School Psychologists

## YOUR PATH TO STRENGTH-BASED PRACTICES

### Summer Virtual Institute 2023

# DR. BYRON MCCLURE, NCSP

## July 13th from 8:30-9:00am



### About the Keynote Speaker

Dr. Byron McClure is a renowned National Certified School Psychologist, best-selling author of Hacking Deficit Thinking, and visionary educator committed to shifting from what's wrong to what's strong.

Dr. McClure holds a Doctor of Education in School Psychology from the Indiana University of Pennsylvania and has over a decade of experience driving change in inner-city communities. Notable for his innovative approach, Dr. McClure has created groundbreaking programs, like Students With A Goal (SWAG) and the Student-Athlete Education Program (SAEP), designed to meet the social and emotional needs of youth furthest from opportunity. As the Assistant Director of School Redesign, he led school transformation initiatives such as the Dream Team, which helped both students and staff learn and use their strengths. Currently, he serves as the Director of Innovation at 7 Mindsets, where he continues transforming the future of education and promoting mental wellness.

### To Learn More About 7 Mindsets

### SCAN THE QR CODE OR LINK: :



### CLICK HERE



**7 MINDSETS** COMPREHENSIVE SOLUTIONS FOR MENTAL HEALTH AND WELL-BEING

**MULTI-TIERED SUPPORT FOR STUDENT MENTAL HEALTH AND WELL-BEING**  
Ensure a Safe, Supportive, and Thriving Learning Environment

COMPREHENSIVE • ACTIONABLE • IMPACTFUL

When educators teach students the life skills and positive mindset they need to form healthy relationships and manage challenges, they set them on a path to success. The 7 Mindsets suite of solutions includes engaging practices to ensure student needs, address those needs with engaging instructional resources, and measure student growth. Unique among education companies, we offer multi-tiered support for SEL, supportive, and thriving learning environments.

- Tier 1 Student and educator well-being solutions
- Tier 2 and 3 social health prevention, intervention, and support
- High-quality assessment to guide instruction and measure impact

**Student and Educator Well-Being**  
**7 Mindsets** teacher and Tier 1 digital instruction and professional learning give students and educators hope for the future, a firm belief in their potential, and a strong sense of belonging and connection.

**Mental Health Support and Intervention**  
**BASEd Educator** primarily focuses on Tier 2 and Tier 3 targeted mental health supports, and offers a robust, evidence-based mental health prevention and intervention education.

**Assessment to Support Effective Instruction**  
**SEL Labs** robust assessment tools help educators decide what to teach to learn and then to measure student learning. SEL Labs assessments offer the only direct measure of social and emotional competencies.

**A Whole-School MTSS Approach for Mental Health and Well-Being**

Learn more at [7mindsets.com](https://7mindsets.com)

COMPREHENSIVE SOLUTIONS FOR MENTAL HEALTH AND WELL-BEING

**Comprehensive Solutions for Mental Health and Well-Being for Every Learner**

**Develop Positive Mindsets and Life Skills**  
**7 Mindsets** helps students build a foundation of connection and belonging with positive student mindsets and life skills. Students learn self-awareness, self-efficacy, perseverance, and many other personal characteristics. The 7 Mindsets are designed to engage every student and educator to live a life of purpose, joy, and play.

- A scaffolded, PwK-12, Tier 1 approach
- Digital curriculum, in English and Spanish
- Professional learning, coaching, and adult SEL

**Students who received 7 Mindsets instruction for at least 3 months showed significant improvements in behavior, attendance, and personal qualities such as resilience and grit.**

**Personalized Student Mental Health Supports for Tier 2 and 3**  
**BASEd Educator's** student mental health platform is evidence-based and CASEL recognized. It provides Tier 2 and Tier 3 supports for students who need mental health intervention, helping them understand and articulate their emotions, develop self-regulation skills, and build healthy relationships with peers and adults.

- Flexible curriculum modules for personalized learning
- Machine Assessment Screener for customized pathways and to measure growth over time
- Built-in notification system that identifies potentially harmful language that may need review

**85%** of students used digital mental health supports

**82%** of educators used digital mental health supports

**100%** of students used digital mental health supports

**Actionable and Insightful Assessment and Surveys**  
**SEL Labs** assessments are easy to implement, program specific, and directly measure students' social and emotional learning strengths and needs. Providing the only direct measure of social and emotional competencies, SEL Labs' assessments are aligned with the CASEL framework, state guidelines, and evidence-based SEL programs.

SEL Labs also offers climate surveys to assess how students perceive essential learning conditions, including students' sense of safety, belonging, and instructional support.

**Solutions are offered together or as individual components.**

**Contact Us Today!**

Founded in 2015, 7 Mindsets is a comprehensive mental health and well-being solution provider for schools and districts across the country. The company offers multi-tiered curriculum, professional development, and assessment that ensure safe and supportive learning environments. Its digital programs have been shown to improve student engagement, behavior, and academic achievement, and have been used by over 3 million students and educators in all 50 states.

**7 MINDSETS**

